



# GLASGOW WESTERWOOD

THE QHOTELS COLLECTION

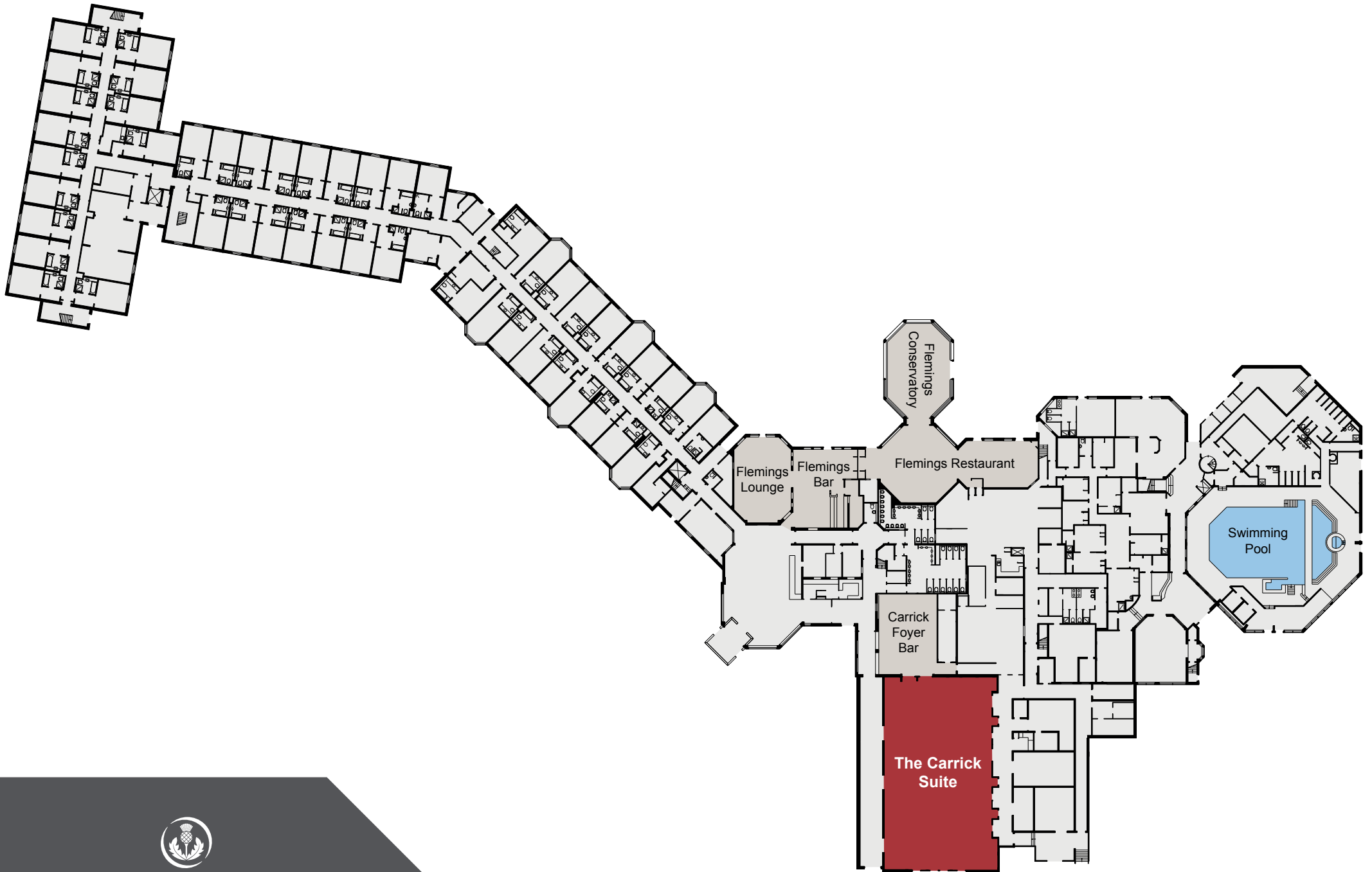
# CAPACITIES

Meeting Room	Dimensions (m) L x W x H	Floor	Theatre	Cabaret	Classroom	Boardroom	Banquet	U-Shape	Dinner Dance
Carrick Foyer	8.0 x 10.0 x 2.4	G	n/a	n/a	n/a	n/a	n/a	n/a	n/a
Carrick Suite	26.4 x 15.0 x 4.4	G	400	180	n/a	n/a	300	n/a	260
Carrick 1	8.5 x 15.0 x 4.4	G	120	60	50	36	100	40	n/a
Carrick 2	8.5 x 15.0 x 4.4	G	120	60	50	36	100	40	n/a
Carrick 3	10.0 x 15.0 x 4.4	G	120	60	50	36	100	40	n/a
Carrick 1 & 2	17.0 x 15.0 x 4.4	G	240	120	n/a	n/a	160	n/a	160
Carrick 2 & 3	18.5 x 15.0 x 4.4	G	240	120	n/a	n/a	160	n/a	160
Club Room	13.2 x 13.6 x 2.5	1	100	48	30	30	90	30	80
Kilsyth Room	9.1 x 9.7 x 2.5	1	60	24	20	20	40	18	n/a
Kelvin Room	7.7 x 6.4 x 2.6	1	40	18	18	18	30	18	n/a
Antonine	7.7 x 6.3 x 2.6	1	40	18	18	18	30	18	n/a
Campsie Room	7.7 x 3.0 x 2.6	1	10	n/a	n/a	8	n/a	n/a	n/a
Carron Room	7.7 x 3.0 x 2.6	1	10	n/a	n/a	8	n/a	n/a	n/a



**GLASGOW WESTERWOOD**

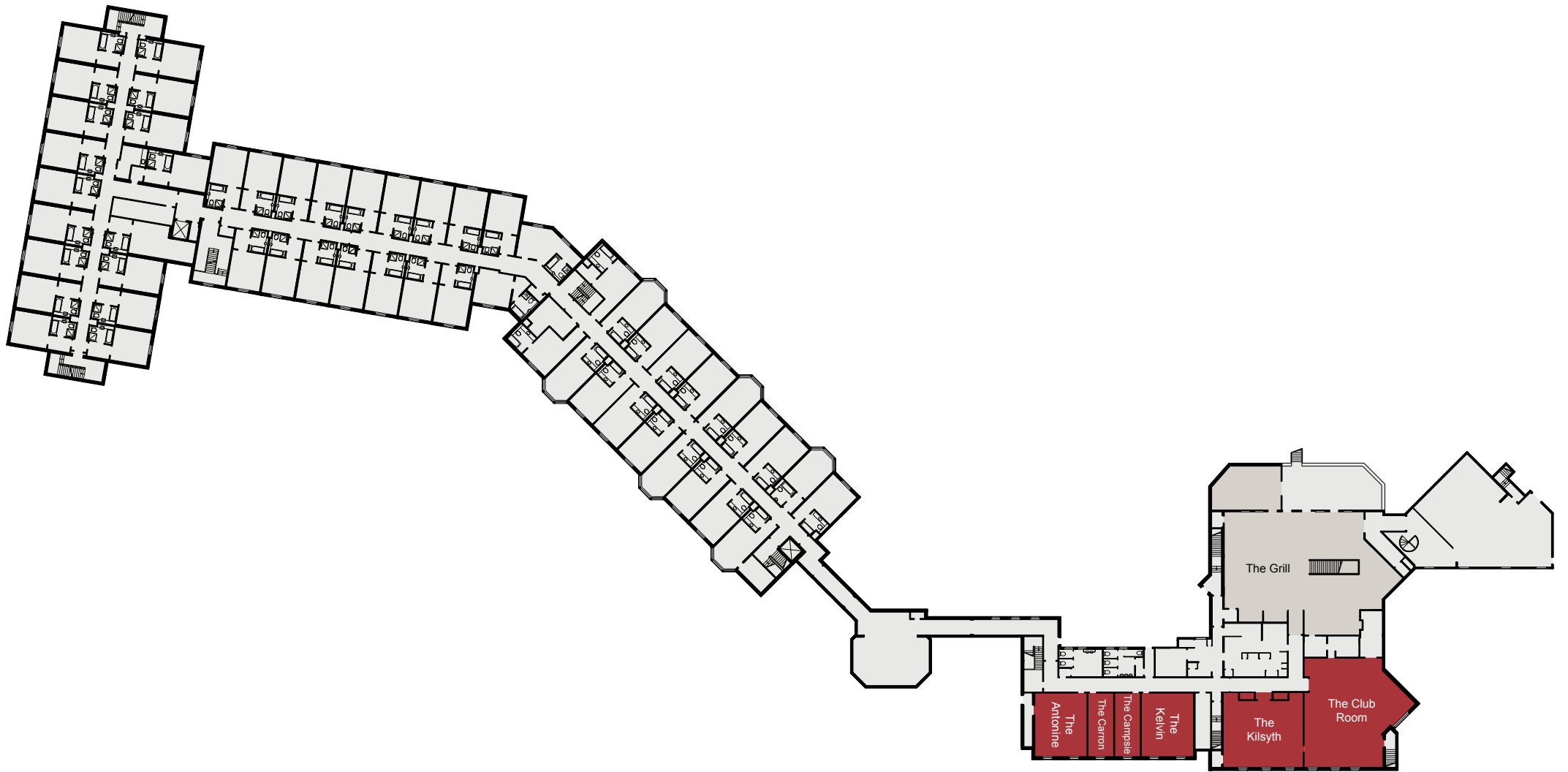
THE QHOTELS COLLECTION



GLASGOW WESTERWOOD

THE QHOTELS COLLECTION

GROUND FLOOR



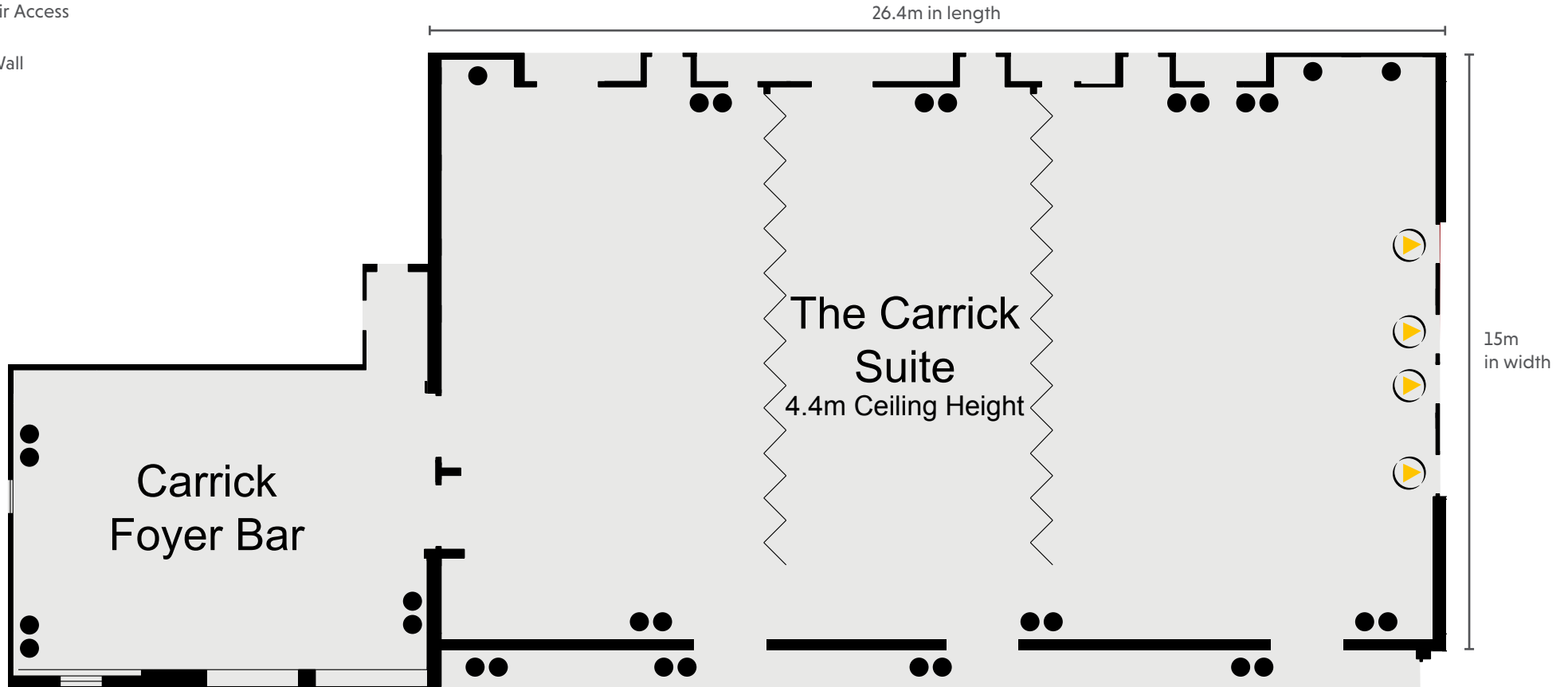
GLASGOW WESTERWOOD

THE QHOTELS COLLECTION

FIRST FLOOR

**KEY**

- Single 13amp Power Point
- Double 13amp Power Point
- ▶ Natural Light
- ☎ Telephone Socket
- ♿ Wheelchair Access
- ⋈ Partition Wall



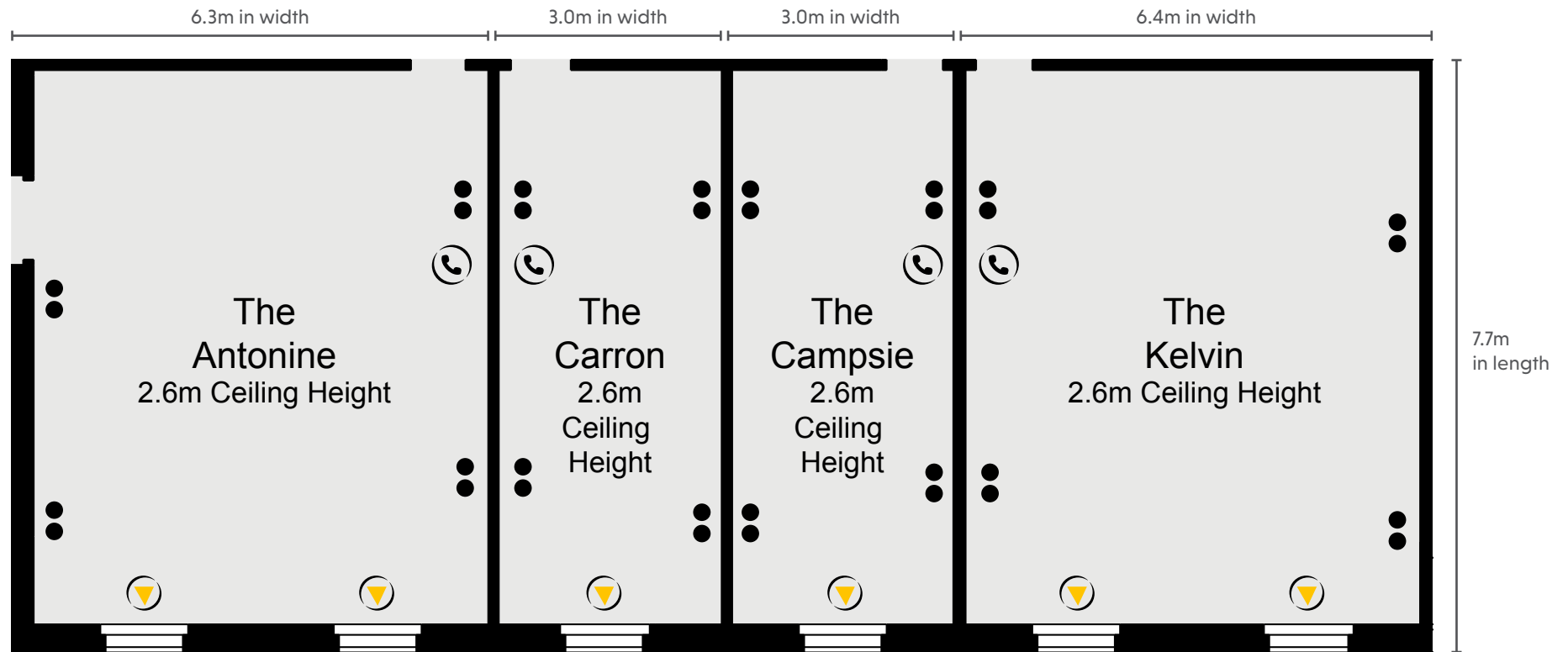
**GLASGOW WESTERWOOD**

THE QHOTELS COLLECTION

GROUND FLOOR

## KEY

- Single 13amp Power Point
- Double 13amp Power Point
- ▶ Natural Light
- ☎ Telephone Socket
- ♿ Wheelchair Access
- ⋈ Partition Wall



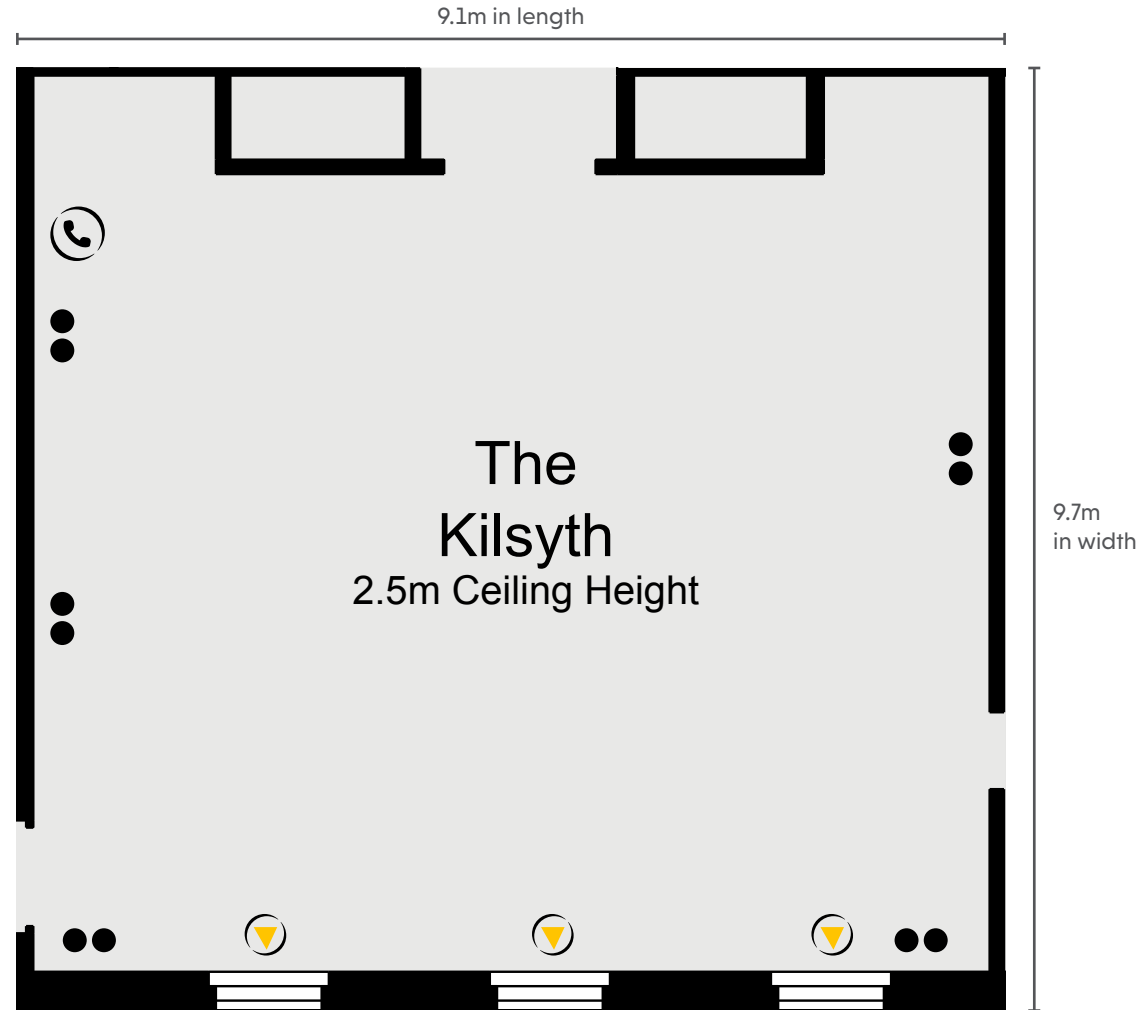
GLASGOW WESTERWOOD

THE QHOTELS COLLECTION

FIRST FLOOR

## KEY

- Single 13amp Power Point
- Double 13amp Power Point
- ▶ Natural Light
- ☎ Telephone Socket
- ♿ Wheelchair Access
- ⋈ Partition Wall



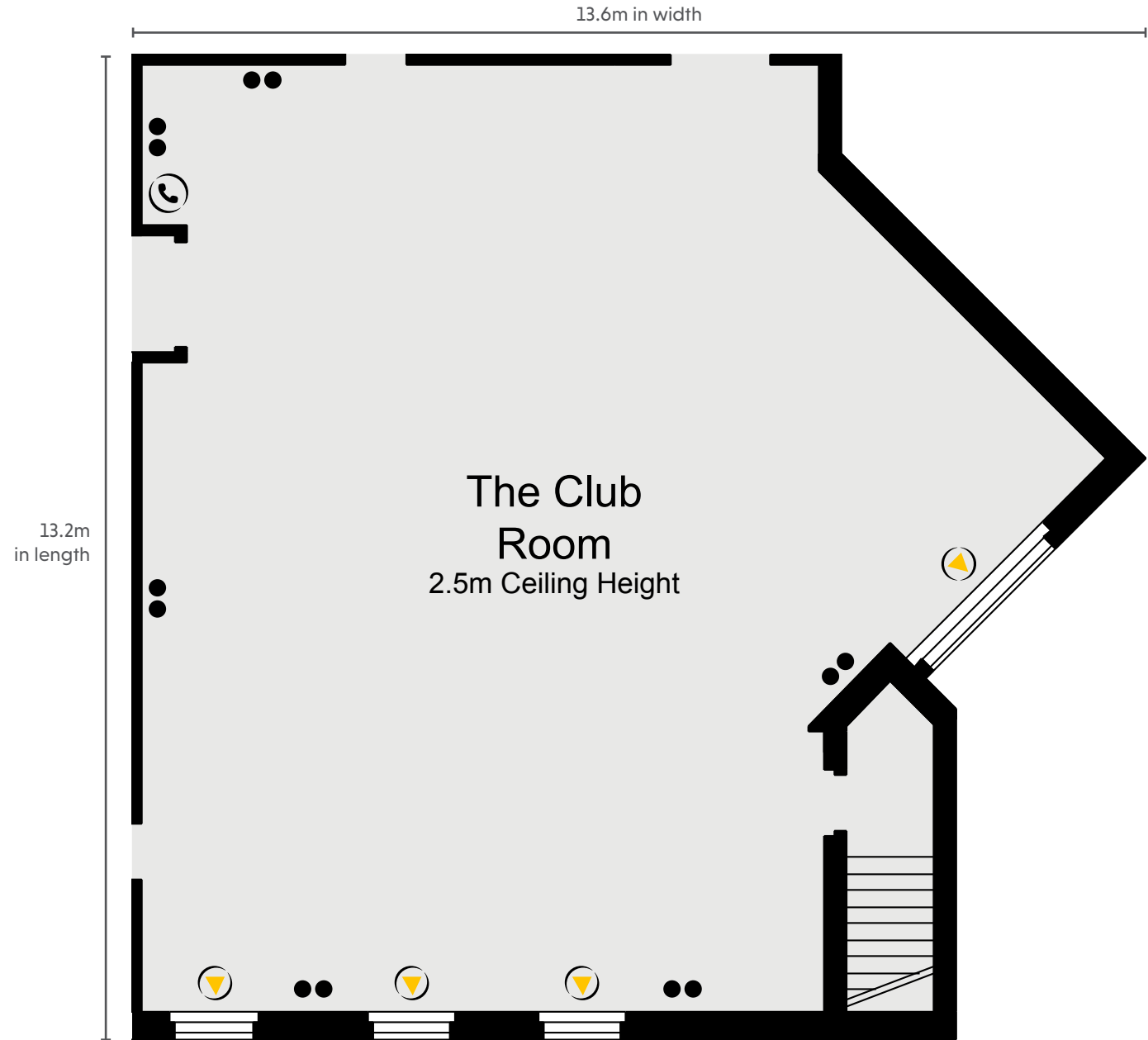
GLASGOW WESTERWOOD

THE QHOTELS COLLECTION

FIRST FLOOR

**KEY**

- Single 13amp Power Point
- Double 13amp Power Point
- ▶ Natural Light
- ☎ Telephone Socket
- ♿ Wheelchair Access
- ⋈ Partition Wall



**GLASGOW WESTERWOOD**

THE QHOTELS COLLECTION

FIRST FLOOR